

veterinaryDR

Complete Digital Veterinary X-Ray Systems

- All-In-One turn-key digital system now available! (shown)
- Retrofit option utilizing existing x-ray also available (not shown)
- NO CASSETTES. Eliminate film or "wear & tear" associated with CR plates
- Maximum Throughput: Image available in 10-20 seconds (**fully processed**)
- Full Mini-PACS Server PC included

VFPXR X-RAY Unit

- Acquisition touch-screen interface built in
- Hi Frequency Generator
32 kW, 400 mA, 125 kVp, 500 mAs

**See panel options & retro-fit solutions on reverse*

2020-Capture Software (Acquisition at X-Ray)

- X-Pipe Technology for the highest quality images
- Auto Processing including AutoCrop & AutoContrast
- Maximum throughput; 100 images/hr
- Background transmission eliminate study transition time
- Intuitive and easy-to-use interface
- Touchscreen interface

Opal-Rad Software

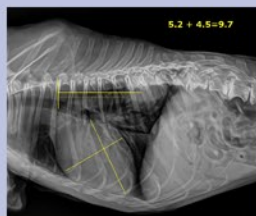
- User Friendly Viewing software
- "Point, Click, & View" Process
- Analysis and diagnosis software
 - Priors: Pre/Post Op image comparison
 - W/L, magnify, zoom, rotate, measure, full annotation set
- Web-Based Software included for remote viewing
- Burn & import CDs
- Optional mOpal Software available for iPad & mobile devices
- Seamless Integration with 3rd Party EHR (HL7)

Complete Veterinary Interface

Enjoy a completely tailored veterinary experience. Patient demographics include the Animal name and breed, and owner name and information. The acquisition will also show four categories of animals, with specific views set for each animal.



Vertebral Heart Score Tool



The Long Axis and Short Axis heart dimensions are transposed onto the vertebral column and recorded as the number of vertebrae beginning with the cranial edge of T4. The values are then added to obtain the vertebral heart size. Normal values are 9.7 +/- 1.0V for dogs, and <8V for cats.

OPTIONAL* mOpal TABLET VIEWING

iPad®, iPhone®, Android™, Blackberry®, and more



Anywhere, Anytime Viewing now on Any Device
mOpal (mobile Opal) is a browser-based viewer for reviewing images on Mac, Windows, mobile devices, tablets and smart phones including iPad, iPhone, Android, and Blackberry. With mOpal, receive fast access both onsite or remotely, available with any 20/20 system.

** mOpal license available at an additional cost*



2020imaging.net/contact

829 S Virginia Rd Suite A - Crystal Lake, IL 60014
Phone: 866-734-6234 • Fax: 919.772.2810

panel options

17x17 Fixed Flat Panel Detector VFP Cesium

The versatile Flat Panel DR panels offer images within seconds of exposure and fits easily into smaller x-ray rooms. The 17x17 inch panels produce high quality images at an affordable price for Flat Panel technology.



TECHNICAL SPECIFICATIONS

- 5 Year Warranty
- Detector Housing
- 17"x17" Imaging Area
- 3.6 lp/mm
- Off-center Imaging
- Pixel Array 3072x3072
- AD conv. 14-bit

14x17 Momentum Wireless Detector VFPW Cesium

20/20 Imaging introduces the newest member of the DR family for Veterinarians, a 14x17" wireless cassette flat panel detector. Lightweight and easy to maneuver, it is a true cassette sized hospital-grade DR Panel manufactured by Konica Minolta with a Cesium scintillator providing the highest image quality possible.



TECHNICAL SPECIFICATIONS

- 3 Year Warranty (7-yr capacitor/battery)
- 14x17
- Rapid Charge enabled
- Cassette sized at 6.4 lbs
- AD conv. 16-bit

14x17/17x17 Hybrid Flat Panel Detector VFPW Cesium Wireless or Tethered

Enjoy 3 unique operating configurations with the 14x17 or 17x17 hybrid, including full wireless, wired power connection, and wired (fixed) power and data connections. Providing the most in versatility with exceptional image quality, and paired with advanced software features and functionality.



TECHNICAL SPECIFICATIONS

- 5 Year Warranty
- Wireless or tethered connectivity
- Cassette sized at 7.9lbs / 10.1lbs
- 14"x17"/17"x17" Imaging Area
- Lithium Ion battery >3.5hrs
- 3.3 lp/mm
- Off-center Imaging
- Pixel Array 2304x2800 / 2800x2800
- AD conv. 14-bit

RETRO-FIT SOLUTIONS

20/20 Imaging offers custom retrofit DR configurations to accommodate your **Summit Innovet** or any existing x-ray equipment (right).



contact 20/20 Imaging for more information

2020imaging.net/contact